

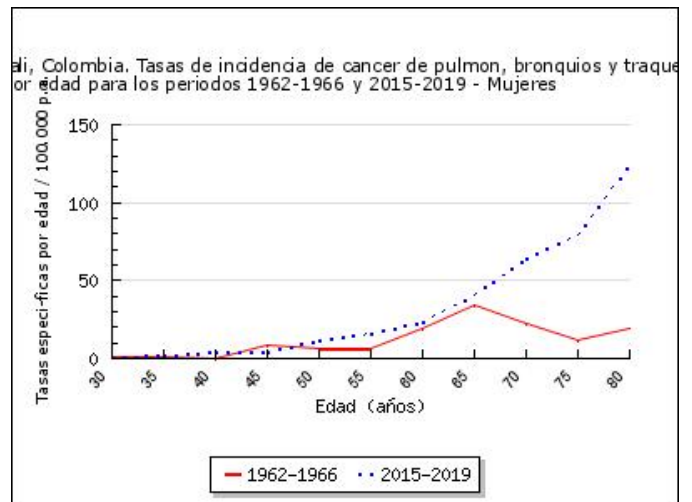
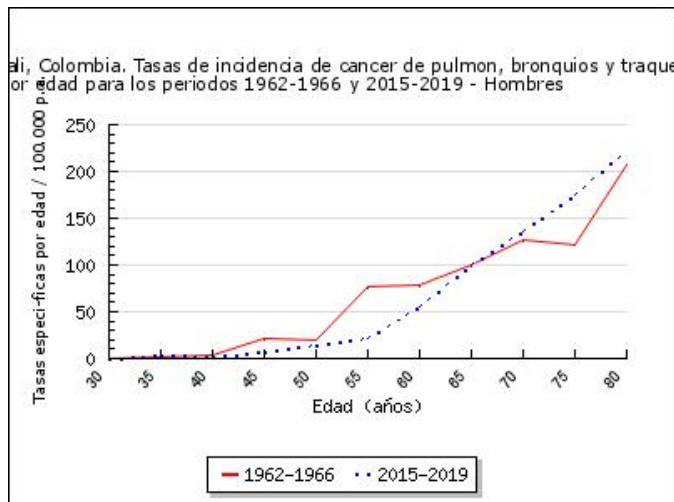
Cali, Colombia. Tasas de incidencia de cáncer de pulmón, bronquios y traquea específicas por edad, crudas y ajustadas por edad durante el periodo 1962-2019

**HOMBRES**

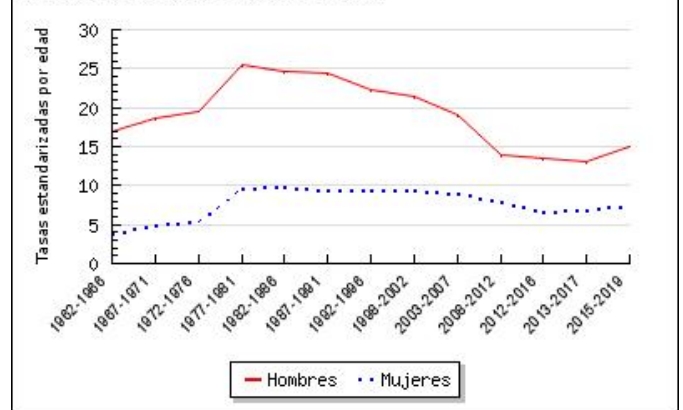
Periodo	30-34	35-39	40-44	45-49	50-54	55-59	60-64	65-69	70-74	75-79	80-84	85	n	TC	TEE
1962-1966	0	1.2	3	21.4	20.4	76.2	78.8	100	127	120.8	206.5	93.2	107	7.3	17
1967-1971	1.8	2.9	10.8	9.9	16.9	40.9	92.1	131.5	111.8	236.7	0	0	145	8.2	18.6
1972-1976	1.4	0	8.8	12.6	22.8	51.7	81.9	139.5	170	186.7	0	0	193	9	19.5
1977-1981	1.2	2.8	4.8	19.8	38.6	71.7	104.8	200.1	177.7	204.9	206.4	159.1	306	11.7	25.4
1982-1986	0.4	4.6	6.4	13.7	31.3	53.6	105.8	153	231.5	266.9	254.5	204.1	436	14	24.6
1987-1991	0.3	1.7	4.2	13	30.8	57.8	110.1	140.2	199.6	308.4	325.8	224.7	536	15.3	24.4
1992-1996	0.5	1.7	3	12.2	19.8	51.8	83.6	148.5	210.9	270.3	299	331.9	584	14.8	22.3
1998-2002	1.1	0.9	4.6	11.4	16.7	48.7	95.5	144.8	192.2	262.1	239.2	285.1	711	16.4	21.5
2003-2007	0.5	2	6.2	7.6	22.3	33.9	50.9	125.9	193.1	259.4	272.9	341.7	804	16.5	19
2008-2012	1.4	1.1	2.5	4.7	11.9	29	45.4	99	148.5	179.6	203.5	187.9	697	13	13.9
2012-2016	0.4	1.8	2.5	5.1	15.3	26	50.9	84.4	116	181.6	220.1	245.3	774	14	13.5
2013-2017	0.4	1.7	1.9	6	14.6	23.8	53.9	79.6	107.3	183.4	186.5	240.7	768	13.6	13.1
2015-2019	0.4	3.5	2.4	6.9	14.3	20.9	55.5	100	136.4	174.7	224.1	278.9	915	15.8	14.9

**MUJERES**

Periodo	30-34	35-39	40-44	45-49	50-54	55-59	60-64	65-69	70-74	75-79	80-84	85	n	TC	TEE
1962-1966	0.9	1	0	8.5	6.1	6.2	19.1	33.9	22.8	12.2	19.8	20	31	1.9	3.8
1967-1971	0	3.5	2.3	5.3	9.9	17.5	29.2	26.3	26.3	26.3	0	0	53	2.6	4.9
1972-1976	0	1.4	5.1	5.3	15.7	14.3	21.8	38.9	26.9	35.5	0	0	71	2.9	5.4
1977-1981	0	1.7	5.6	7	18.6	34.6	35.6	73	39.5	75.5	91.2	95.4	153	5.1	9.7
1982-1986	0.7	0.4	6.7	7.1	15.9	28.2	54.9	62.5	65.9	43.7	45.8	89	214	6.1	9.8
1987-1991	0.3	0.4	3.4	6.1	9.7	31.8	44.6	52.2	59.1	122.7	84	67.3	261	6.7	9.5
1992-1996	0.7	1.7	2	6.3	9.1	25.8	41.1	58.5	77	91	153	98.6	321	7.3	9.5
1998-2002	0.5	1.6	3.1	9.3	9.7	15.3	46.8	62.5	86.2	82.9	97.8	120.8	412	8.5	9.4
2003-2007	1	1.7	3.3	3.8	14.6	21.1	35.7	57.9	71.1	97.8	104.9	118	504	9.4	8.9
2008-2012	0.7	1.2	2.4	5.9	13.3	13.1	32.3	44.8	63.7	96.9	126	120.1	568	9.7	8
2012-2016	0.2	1.1	3.2	3.4	9.6	13.7	20	34.7	57.7	79.5	139.7	128.7	566	9.2	6.7
2013-2017	0.4	1.6	3.2	3.9	9.7	12.9	23.6	32.9	55.7	86.3	124.6	143.8	599	9.7	6.9
2015-2019	0.8	2.1	3.8	4.4	11.9	16.4	24	40.2	64	79.1	124.6	135.6	687	10.9	7.6



Colombia. Tendencia de la incidencia de cancer de pulmon, bronquios y traquea en género durante los periodos 1962-2019



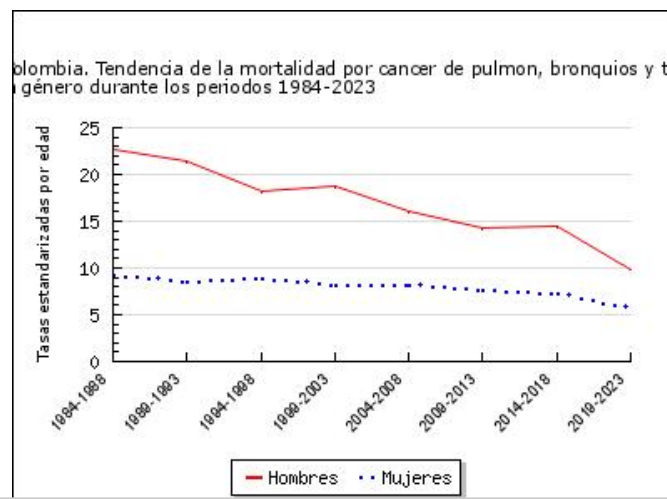
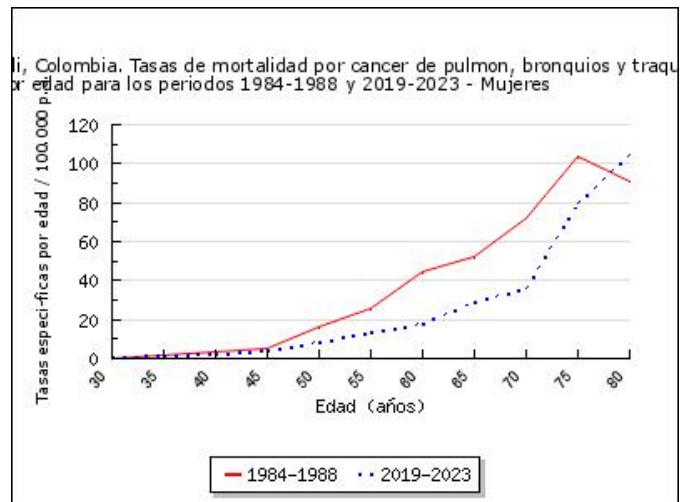
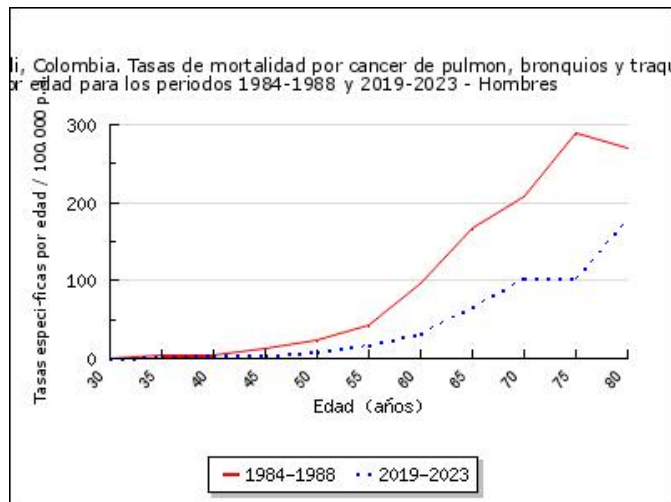
Cali, Colombia. Tasas de mortalidad por cáncer de pulmon, bronquios y traquea específicas por edad, crudas y ajustadas por edad durante el periodo 1984-2023

**HOMBRES**

Periodo	30-34	35-39	40-44	45-49	50-54	55-59	60-64	65-69	70-74	75-79	80-84	85	n	TC	TEE
1984-1988	0.8	3.4	4.9	13.2	24	43.5	95.9	167.2	207.2	289.4	269.9	203.2	421	13.3	22.6
1989-1993	1.2	1.2	3.9	11.6	31.5	53.3	83.4	129.1	201.5	289.9	315.7	170.1	504	13.8	21.4
1994-1998	0.6	1	2.4	8.5	14.6	42.8	61.2	132.2	176.6	249.6	259.9	252.4	520	12.8	18.3
1999-2003	0.3	1.2	4.1	10.1	17.2	33.6	83	124.8	179.6	238.6	193.8	302.2	648	14.7	18.8
2004-2008	0.5	1.1	4.5	7.6	18.7	25	48	98.4	160.1	228.6	274.1	280	709	14.2	16
2009-2013	0.7	1.6	2.5	4.6	13.2	27.4	45.9	92.5	139.9	194.6	276.6	234	753	13.9	14.3
2014-2018	0.2	1.3	1.4	4.6	11.6	26.6	50.3	83.7	138.1	199.1	265	308.9	799	14.4	14.4
2019-2023	0.8	1.4	3.3	3.3	7.6	18.2	31.3	66.4	103.7	103.8	180.9	180.3	751	14.3	9.8

**MUJERES**

Periodo	30-34	35-39	40-44	45-49	50-54	55-59	60-64	65-69	70-74	75-79	80-84	85	n	TC	TEE
1984-1988	0.3	1.7	3.5	5.5	16.1	26	44.5	52	72	103.6	90.5	84.2	219	6.1	9.2
1989-1993	0	0.7	1.8	7.5	10.6	19.3	42.5	47.7	68.7	100.4	128.4	69.4	249	6.1	8.5
1994-1998	0.7	2	0.7	5.2	12.1	18.1	49.1	49.2	64.4	107.5	113.1	109.8	328	7.2	8.9
1999-2003	0.5	1.6	2.7	7.3	12	13.6	34.3	56.9	69.2	93.9	95.6	93.5	382	7.7	8.2
2004-2008	1.2	1.7	3.1	3.7	10.4	19.1	28.9	54.1	65.8	94	107.8	131.4	490	8.9	8.2
2009-2013	0.4	1.9	1.7	4.4	10.3	12.5	22.6	43.9	70.1	102.6	135.2	139.1	573	9.6	7.6
2014-2018	0.2	1.2	1.7	4.3	8.6	15.9	19.7	37.6	67.3	96.6	139.2	164.6	602	9.9	7.3
2019-2023	0.9	1.7	2.5	4.6	8.2	13.7	18.3	28.9	35.7	79.6	105	102.1	646	10.6	5.7



TC Tasas crudas; TEE Tasas estandarizadas por edad con la población mundial de referencia