

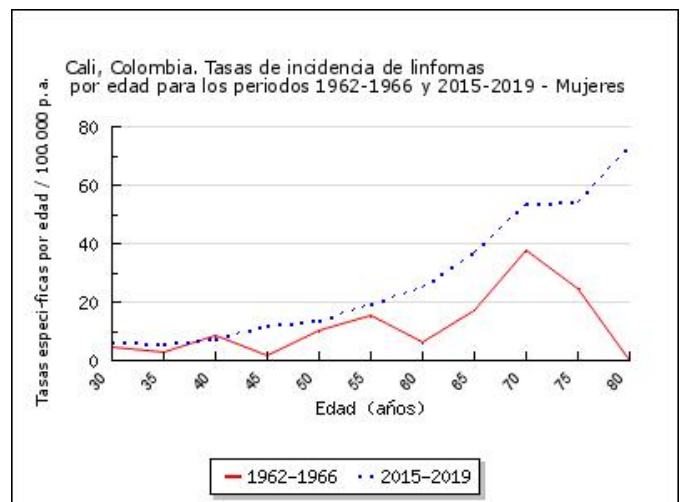
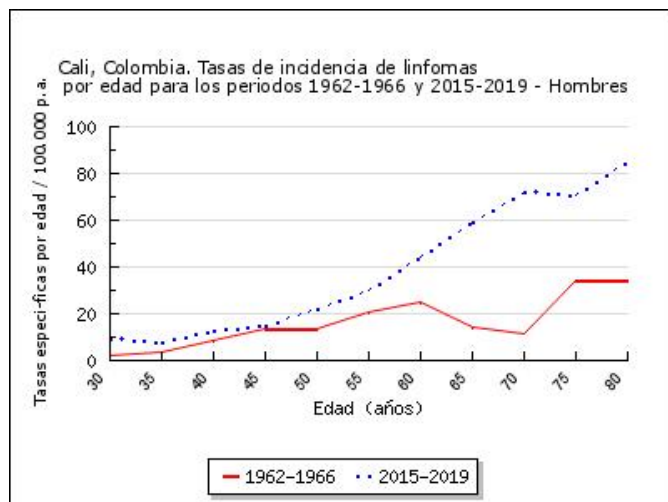
Cali, Colombia. Tasas de incidencia de linfomas específicas por edad, crudas y ajustadas por edad durante el periodo 1962-2019

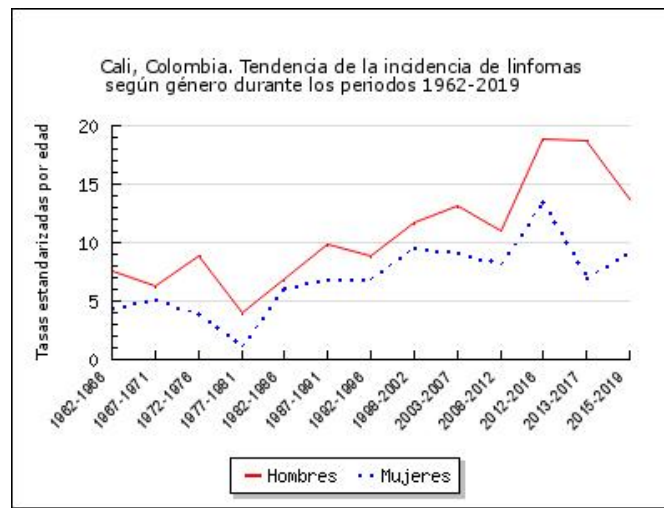
HOMBRES

Periodo	30-34	35-39	40-44	45-49	50-54	55-59	60-64	65-69	70-74	75-79	80-84	85	n	TC	TEE
1962-1966	1.9	3.5	8.9	13.6	13.6	20.8	24.9	14.2	11.5	34.5	34.4	0	81	5.6	7.6
1967-1971	13.6	7.7	2.4	4.9	7.5	11.7	23	13.2	13.2	35	0	0	83	4.7	6.3
1972-1976	7.9	8.6	8.8	7.5	12.2	10.4	30.7	50.4	28.3	24.9	0	0	132	6.2	8.8
1977-1981	2.4	3.5	3.2	3.1	7.5	7	12.6	10.2	13.7	9.8	18.8	0	81	3.1	4
1982-1986	2.5	3.5	5.2	8.9	11.9	17.9	15.3	11.4	28.5	87.2	40.7	0	163	5.2	6.9
1987-1991	4.6	4.1	6.8	12.3	15.7	20.6	20.8	30.5	51.2	56.8	45.5	64.2	267	7.6	9.8
1992-1996	5	9.4	7.7	7.6	12.3	18.2	21.9	24.8	44.3	50.7	35.9	87.3	289	7.3	8.8
1998-2002	6.6	9.4	9.6	16.4	17.8	25.4	23.2	45.9	69	63.8	57.6	58.3	442	10.2	11.7
2003-2007	6.5	10.7	16.3	16.6	23.2	30.4	40.1	50.8	63.1	78	69.1	88.9	595	12.2	13.2
2008-2012	4.8	8.3	10	13.9	14.4	19.7	32.1	52	54.4	64.1	73.2	90	577	10.8	11
2012-2016	11.7	12	21.3	23.3	26.2	42.6	44.8	73.9	114.1	135.5	145	133.4	1091	19	18.8
2013-2017	13.2	12.2	21.6	19.9	30.1	41.1	50.4	77.7	89.9	112.8	105.5	130.9	1105	19.6	18.7
2015-2019	9.4	8	12.9	15.2	22	30.3	44	59.6	72.2	70.4	85	102	844	14.6	13.7

MUJERES

Periodo	30-34	35-39	40-44	45-49	50-54	55-59	60-64	65-69	70-74	75-79	80-84	85	n	TC	TEE
1962-1966	4.3	3.1	8.5	1.7	10.2	15.6	6.4	16.9	38	24.4	0	0	49	3	4.5
1967-1971	0.7	2.7	1.1	6.5	18.1	8.8	35.1	15	13.2	15.8	0	0	67	3.3	5.2
1972-1976	1.9	0.7	2.5	4.2	2.6	9	10.9	19.5	0	27.6	0	0	75	3.1	3.9
1977-1981	1	0.6	1.4	0	0	1.5	0	0	10.8	20.6	0	0	28	0.9	1.1
1982-1986	2.9	1.7	6	4.9	11.2	14.6	22.2	18.4	35.4	19.8	52.4	22.2	159	4.5	6.1
1987-1991	3.2	1.8	5.9	5.5	11.1	18.6	23.8	34.3	36.7	59.8	19.8	24.5	210	5.4	6.9
1992-1996	0.9	2.6	4.7	8.8	11.5	13.7	31.1	34.8	35.1	39	23.5	25.9	239	5.4	6.8
1998-2002	5.4	5.1	6.5	8.9	18.1	20.7	35.3	40.4	47.4	57	63.3	47.6	441	9	9.6
2003-2007	5.4	8.8	8.3	13.6	12.1	16.9	28.9	34.7	70.2	50.9	61.2	59	521	9.7	9.2
2008-2012	3.9	6.3	4.8	9.1	13.3	19.6	23.8	37.2	42.2	64.2	73.8	57.9	552	9.5	8.2
2012-2016	8.6	10.7	11.8	19.2	21.2	33.3	33	51	92.6	83.1	106.7	100.7	1021	16.2	13.5
2013-2017	4	5.1	6.8	9.2	10	17	15.4	26.5	42	38.8	66.9	41.3	536	8.7	7
2015-2019	6.2	6	7.6	12	13.9	19.6	25	37.1	54	54.1	73.6	56.9	740	11.7	9.1





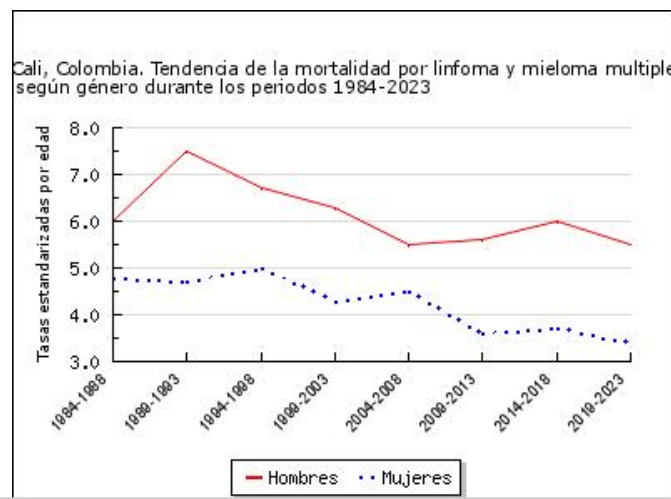
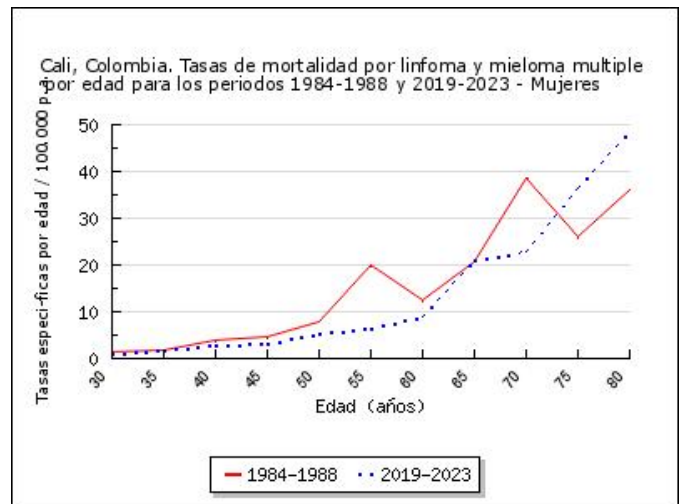
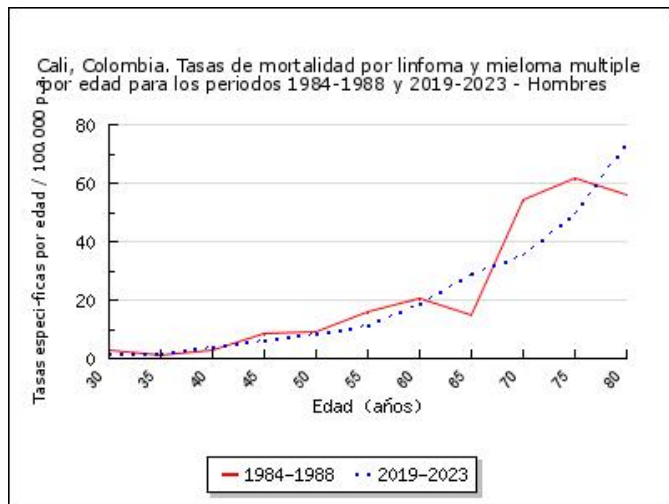
Cali, Colombia. Tasas de mortalidad por linfoma y mieloma múltiple específicas por edad, crudas y ajustadas por edad durante el periodo 1984-2023

HOMBRES

Periodo	30-34	35-39	40-44	45-49	50-54	55-59	60-64	65-69	70-74	75-79	80-84	85	n	TC	TEE
1984-1988	2.8	1	3.1	8.6	8.9	16	20.3	15	54.1	61.7	55.9	38.1	132	4.2	6
1989-1993	3.7	3.5	5.9	5.8	12	22.7	24	35.2	52.8	49.6	77.2	40	201	5.5	7.5
1994-1998	2.2	3.1	5.3	4.3	13.4	19.3	20.4	32.7	38.8	47.5	54.1	55.2	212	5.2	6.7
1999-2003	2.5	2.5	2.1	8.8	8.6	20.3	18.4	30.6	53.6	42.4	50.6	30.8	231	5.2	6.3
2004-2008	1.9	1.7	5.1	4.8	9.5	11.1	16.2	26.5	54.2	39	52.8	43.7	249	5	5.5
2009-2013	0.9	1.9	4.7	7.5	4.8	7.1	23.2	33.5	39.1	42	94	57.6	296	5.5	5.6
2014-2018	0.9	1.5	3.6	6	5.8	10.6	20.9	33.8	56.1	48.7	84.1	62.5	330	5.9	6
2019-2023	2	1.9	4.2	6.5	8.6	11.5	18.8	28.9	35.3	49.8	73.8	60.1	392	7.5	5.5

MUJERES

Periodo	30-34	35-39	40-44	45-49	50-54	55-59	60-64	65-69	70-74	75-79	80-84	85	n	TC	TEE
1984-1988	1.4	1.7	4.1	4.8	7.7	20	12.4	20.8	38.4	25.9	36.2	28.1	123	3.4	4.8
1989-1993	0.5	1.7	2.7	4	6.6	15.1	18.4	35.1	30.5	35.4	9.2	40.5	139	3.4	4.7
1994-1998	2.7	1.7	2.6	4.2	4.4	13.2	20.1	39.2	18	51.5	38.9	27.4	188	4.1	5
1999-2003	1.5	2.1	1.5	3.3	6.7	11.9	16.1	23.6	24.2	37.2	32.8	34.6	201	4.1	4.3
2004-2008	1.7	2	1.5	4.5	5.9	9.4	21.2	27.4	34.2	36.8	37.3	32.2	260	4.7	4.5
2009-2013	0.9	1.4	1.9	2.7	2.8	6.6	17.2	18.3	24.9	41.8	43.4	50	258	4.3	3.6
2014-2018	1.2	1.6	1.7	2.6	3.9	4.8	15.2	14.9	35.1	46.5	50.2	54.2	290	4.8	3.7
2019-2023	1.1	1.9	3	3.2	5.3	6.5	9.1	21	22.8	36.3	48.7	33.7	351	5.8	3.4



TC Tasas crudas; TEE Tasas estandarizadas por edad con la población mundial de referencia