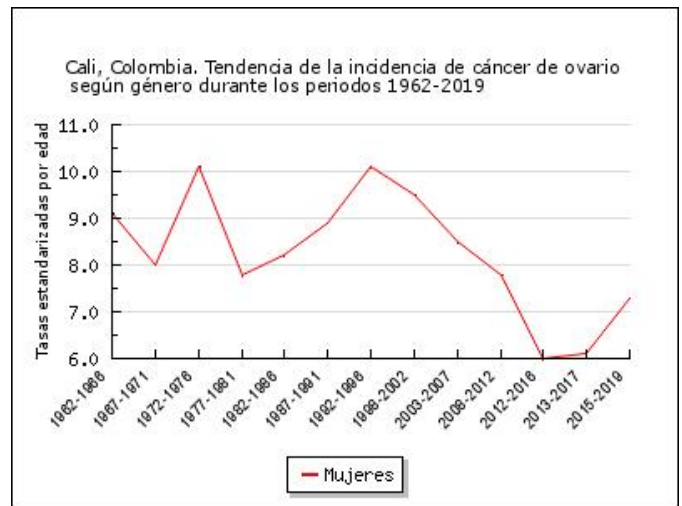
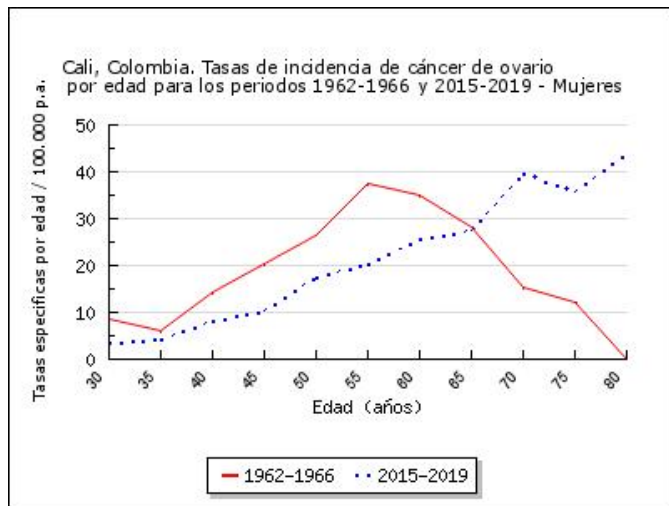


Cali, Colombia. Tasas de incidencia de cáncer de ovario específicas por edad, crudas y ajustadas por edad durante el periodo 1962-2019

MUJERES

Periodo	30-34	35-39	40-44	45-49	50-54	55-59	60-64	65-69	70-74	75-79	80-84	85	n	TC	TEE
1962-1966	8.6	6.2	14.2	20.3	26.6	37.4	35	28.2	15.2	12.2	0	20	95	5.8	9.1
1967-1971	6.6	11.4	19.4	19.7	26.3	24.1	38	11.3	0	10.5	0	0	104	5.1	8
1972-1976	3.8	6.4	22	18	27.5	28.7	41.4	38.9	22.4	27.6	0	0	162	6.6	10.1
1977-1981	2.1	6.9	9.1	13.1	26.2	22.5	23.1	25.3	39.5	20.6	57	23.9	147	4.9	7.8
1982-1986	5.5	4.8	6.7	10.6	17.5	25.1	27.5	46	45.6	23.8	39.3	14.8	203	5.8	8.2
1987-1991	4.4	2.8	8.3	14.6	19.4	22.1	38.4	34.3	36.7	75.5	34.6	24.5	268	6.8	8.9
1992-1996	3.1	7.3	7.5	19.4	26.1	28.9	30.2	39.8	51.9	39	31.4	20.8	359	8.1	10.1
1998-2002	2.9	7.5	7.5	12.3	21.3	31.3	35.3	44.1	44.9	46.6	46	47.6	426	8.8	9.5
2003-2007	2.7	6.7	10.1	16	17.9	22.5	28.9	34.8	46.2	53.5	41.5	56.2	477	8.9	8.5
2008-2012	3.3	5.1	12.5	13.3	16.7	21.8	29.4	29.6	35.3	34.8	43.2	27.9	514	8.8	7.8
2012-2016	2.3	3	6.6	11.1	16	15	19.2	21.5	32.8	31.8	42.4	29.8	454	7.2	6
2013-2017	3	2.4	6.4	10.1	14.2	18.2	20.2	24.5	33	25.9	44.1	35.9	472	7.6	6.1
2015-2019	3.6	4.3	8.1	10.5	17.5	20.2	25.7	27.5	39.6	35.8	43.9	38.5	591	9.4	7.3



Cali, Colombia. Tasas de mortalidad por cáncer de ovario específicas por edad, crudas y ajustadas por edad durante el periodo 1984-2023

MUJERES

Periodo	30-34	35-39	40-44	45-49	50-54	55-59	60-64	65-69	70-74	75-79	80-84	85	n	TC	TEE
1984-1988	1.4	1.7	4.7	3.4	10	11	19.8	34.7	31.2	25.9	18.1	7	105	2.9	4.4
1989-1993	0.8	0.7	3.6	8.7	7.3	15.9	27.1	23.8	26.7	50.2	9.2	5.8	147	3.6	4.9
1994-1998	0.2	1.4	3.3	4.7	9.4	18.1	16.1	31.3	34.4	17.9	46	27.4	176	3.9	4.8
1999-2003	0.5	2.1	3	9.2	10.2	12.4	20.3	30.6	48.4	42.1	38.2	41.6	256	5.2	5.6
2004-2008	1.2	3.2	3.8	6.9	9	11.6	21.2	21.8	34.2	52.1	37.3	48.3	298	5.4	5
2009-2013	0.6	1	3.4	4.1	10.6	9.7	15.8	23.2	27.9	23.9	38.4	45.6	287	4.8	4.1
2014-2018	1	1.2	2.4	5.3	8.6	12.1	16	20.4	28.5	23.7	35.6	42.6	302	5	4
2019-2023	0.7	0.2	3.3	4.8	7.9	14.3	17.1	15.7	23.3	34.2	26	27.9	372	6.1	3.9

