

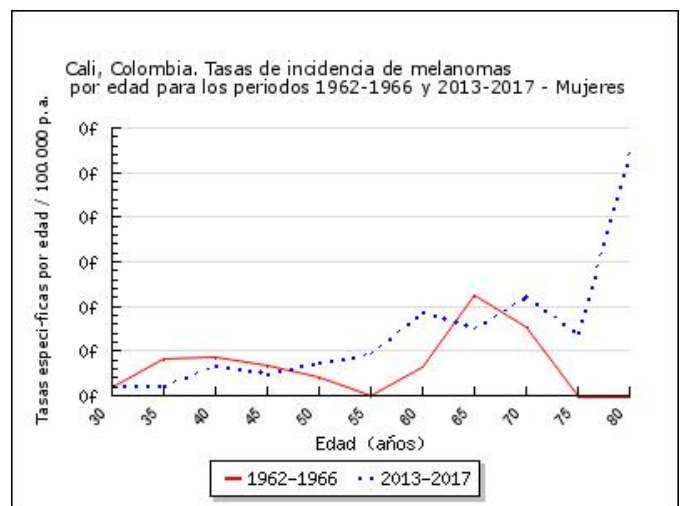
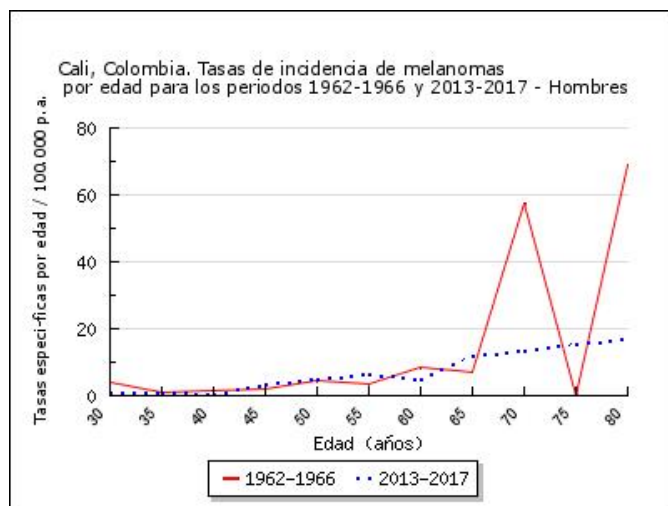
Cali, Colombia. Tasas de incidencia de melanomas específicas por edad, crudas y ajustadas por edad durante el periodo 1962-2017

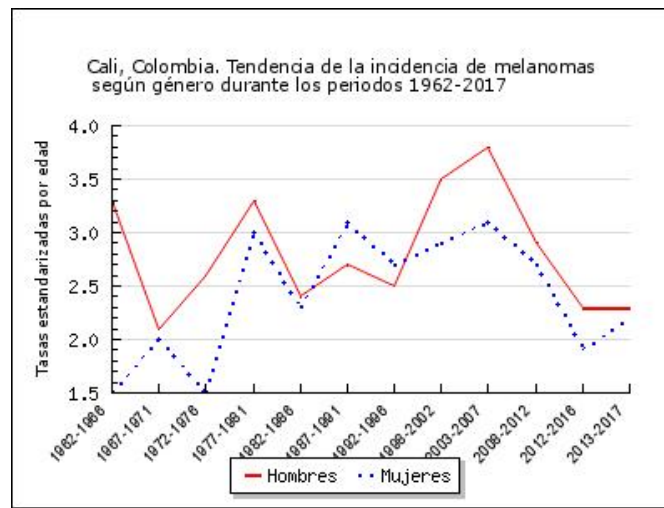
HOMBRES

Periodo	30-34	35-39	40-44	45-49	50-54	55-59	60-64	65-69	70-74	75-79	80-84	85	n	TC	TEE
1962-1966	3.8	1.2	1.5	1.9	4.5	3.5	8.3	7.1	57.7	0	68.8	46.6	23	1.6	3.3
1967-1971	0.9	1	0	6.6	1.9	5.8	0	13.2	13.2	26.3	0	0	18	1	2.1
1972-1976	0.7	1.7	2.9	1.3	4.6	0	15.4	15.5	5.7	24.9	0	0	29	1.4	2.6
1977-1981	0	1.4	2.4	10.4	7.5	5.2	12.6	6.8	13.7	39	18.8	45.5	48	1.8	3.3
1982-1986	0	0	3.2	5.7	7.4	2.4	6.1	6.8	19	10.3	20.4	0	48	1.5	2.4
1987-1991	2	0.8	3.1	6.1	2.4	3.1	8.6	12.6	10.2	28.4	7.6	10.7	69	2	2.7
1992-1996	0.3	1.7	1.3	1.2	4.1	4.5	8	11.6	14.8	13.5	29.9	34.9	73	1.8	2.5
1998-2002	0.3	1.3	3.9	5	7.2	10.2	13.4	9.4	14.8	30.7	13.3	64.8	124	2.9	3.5
2003-2007	0.5	1.7	3.6	4.7	8.2	8.8	13.1	14.6	25	32.6	51.8	74.9	168	3.5	3.8
2008-2012	0.7	0.3	1.9	3.2	5.4	6.9	12.1	11.5	17.7	19.2	35.3	66.5	151	2.8	2.9
2012-2016	0.7	1.3	1.1	4	5	5.5	7.7	9.8	14.1	17.3	25	43.3	135	2.4	2.3
2013-2017	1.1	1	0.6	3.7	5.2	6.4	4.9	12.1	13.7	15.5	17.2	49.5	137	2.4	2.3

MUJERES

Periodo	30-34	35-39	40-44	45-49	50-54	55-59	60-64	65-69	70-74	75-79	80-84	85	n	TC	TEE
1962-1966	0.9	4.2	4.3	3.4	2	0	3.2	11.3	7.6	0	0	0	16	1	1.5
1967-1971	2.2	2.6	1.1	0	8.2	6.6	2.9	7.5	6.6	15.8	0	0	26	1.3	2
1972-1976	0.6	2.1	0.8	1.1	2.6	5.4	0	9.7	9	11.8	0	0	22	0.9	1.5
1977-1981	1.6	4	3.5	4.4	4.4	7.5	8.9	16.8	3.6	13.7	22.8	11.9	60	2	3
1982-1986	1.5	0.9	1.2	0.7	10.4	5.2	5.2	5.5	12.7	11.9	32.7	7.4	61	1.7	2.3
1987-1991	2	3.9	5.9	4.3	5.5	7.1	10.4	7.5	14.3	12.6	14.8	12.2	102	2.6	3.1
1992-1996	1.6	2	2.4	1.6	6.7	6.1	7.5	13.7	13.4	23.4	15.7	15.6	100	2.3	2.7
1998-2002	1.2	2.4	2.8	1.5	6.5	7.7	10.8	13.8	15.8	22.5	28.8	3.7	135	2.8	2.9
2003-2007	1.2	2.5	4.1	3.8	4.7	6.6	11.7	13.8	17.6	22.2	21.9	22.5	173	3.2	3.1
2008-2012	0.7	1.5	1.9	3.2	6.6	6.5	13.3	13.9	8.4	8.4	27	23.6	180	3.1	2.7
2012-2016	1.4	0.9	2.5	2.2	4.6	4	7.8	4.7	12.1	5.3	26.7	29.8	153	2.5	1.9
2013-2017	1.2	1.1	3.4	2.4	3.7	4.7	9.4	7.5	11	6.9	27.4	28.8	174	2.8	2.2





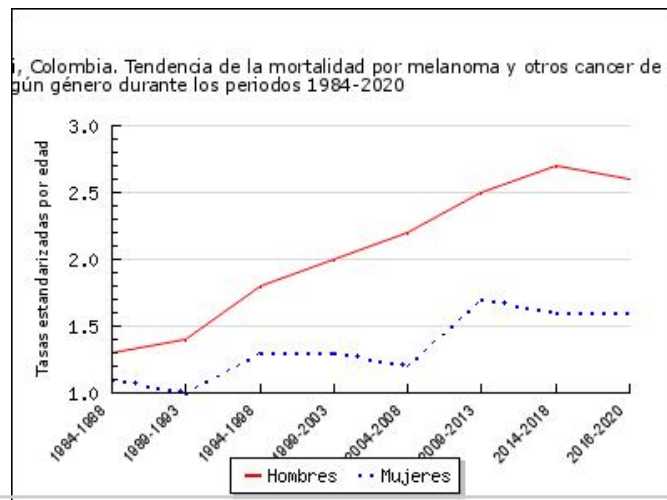
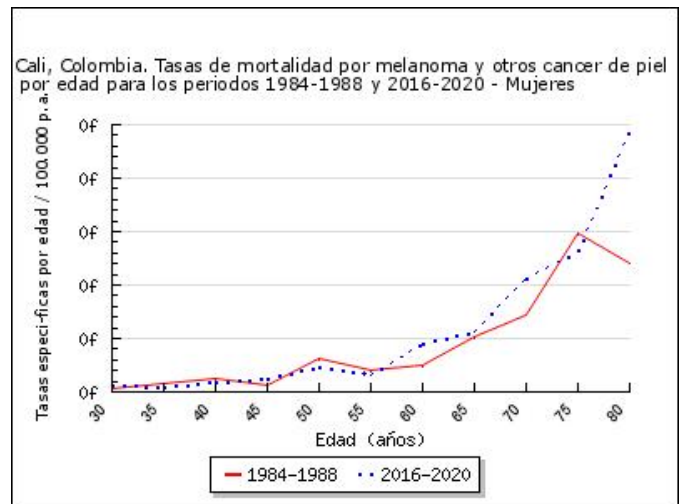
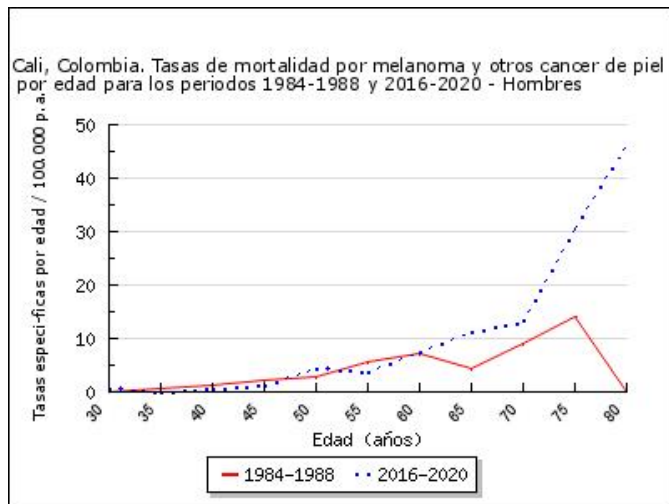
Cali, Colombia. Tasas de mortalidad por melanoma y otros cancer de piel especificas por edad, crudas y ajustadas por edad durante el periodo 1984-2020

HOMBRES

Periodo	30-34	35-39	40-44	45-49	50-54	55-59	60-64	65-69	70-74	75-79	80-84	85	n	TC	TEE
1984-1988	0	0.5	1.2	2.3	2.7	5.7	7.3	4.3	9	14.2	0	0	27	0.9	1.3
1989-1993	0.3	0	1.5	0.6	0	1	2.3	8.4	21.6	15.3	35.1	10	34	0.9	1.4
1994-1998	0.3	1	0.8	2.1	1.3	4.2	3.9	5.5	15.5	23.8	32.5	47.3	55	1.4	1.8
1999-2003	0	1.2	1	2.2	1.6	2.8	7	9.1	12.6	24.5	29.5	43.2	74	1.7	2
2004-2008	0	0.6	2.1	1.5	2.6	4.5	9.6	6.6	16.4	19.5	29.7	52.5	98	2	2.2
2009-2013	0.5	0.8	0.8	0.9	3.1	4.4	7.5	8	18.4	23.3	60.9	86.4	135	2.5	2.5
2014-2018	0.2	1.5	0.6	1.4	2.9	3.7	7	11	13.5	22.1	58.6	114	152	2.7	2.7
2016-2020	0.6	0	0.5	1.4	4.4	3.7	7.5	11.3	13	30.5	46.2	103.2	168	2.9	2.6

MUJERES

Periodo	30-34	35-39	40-44	45-49	50-54	55-59	60-64	65-69	70-74	75-79	80-84	85	n	TC	TEE
1984-1988	0.3	0.8	1.2	0.7	3.1	2	2.5	5.2	7.2	14.8	12.1	21.1	29	0.8	1.1
1989-1993	0	0.3	1.4	0	0.7	5.9	3.9	2.8	1.9	20.7	18.3	11.6	33	0.8	1
1994-1998	1	0	1.5	0.9	1.7	2.1	5.6	2.2	12	15.7	17.7	27.4	53	1.2	1.3
1999-2003	0.2	0.3	0.3	0.4	3.1	1.7	1.4	9.6	9.2	9.7	21.9	52	65	1.3	1.3
2004-2008	0	0	1.5	0.5	1.4	3.1	2.4	2.1	12.3	15.2	16.6	42.9	78	1.4	1.2
2009-2013	0.6	0.5	1	2.4	2.8	3.1	2.7	5.5	5.3	12.9	31.7	73.9	132	2.2	1.7
2014-2018	0.4	0.5	0.7	2.4	1.6	2.9	3.3	6.6	6.6	9.1	24.3	63.9	126	2.1	1.6
2016-2020	0.6	0.4	0.9	1.2	2.4	1.6	4.6	5.6	10.7	13.1	24.6	66.1	152	2.4	1.6



TC Tasas crudas; TEE Tasas estandarizadas por edad con la población mundial de referencia