

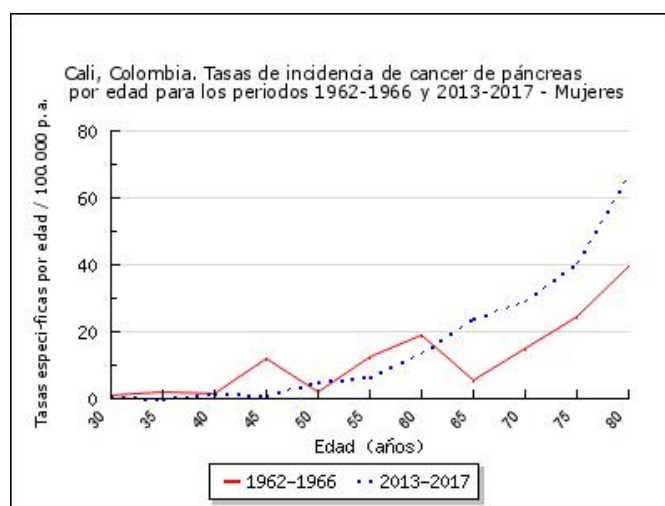
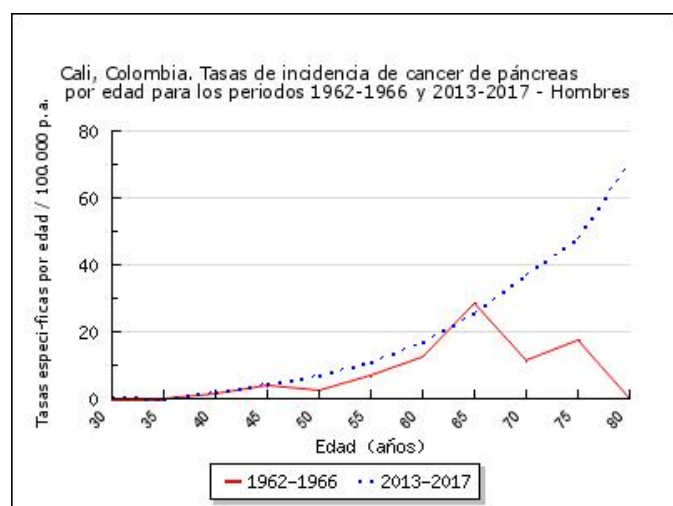
Cali, Colombia. Tasas de incidencia de cáncer de páncreas específicas por edad, crudas y ajustadas por edad durante el periodo 1962-2017

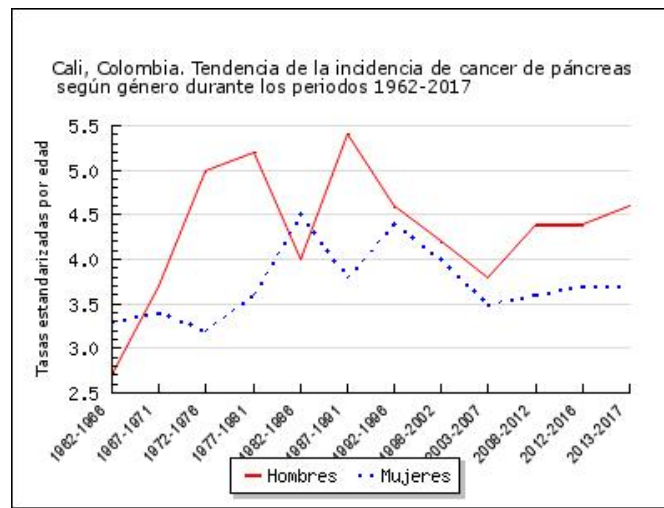
HOMBRES

Periodo	30-34	35-39	40-44	45-49	50-54	55-59	60-64	65-69	70-74	75-79	80-84	85	n	TC	TEE
1962-1966	0	0	1.5	3.9	2.3	6.9	12.4	28.6	11.5	17.3	0	46.6	16	1.1	2.7
1967-1971	0	0	0	6.6	7.5	11.7	13.2	35.1	6.6	35.1	0	0	30	1.7	3.7
1972-1976	1.4	0	2.9	3.8	3	8.3	30.7	15.5	51	62.2	0	0	50	2.3	5
1977-1981	0.6	0	1.6	1	7.5	19.2	18.9	20.4	36.4	87.8	93.8	45.5	62	2.4	5.2
1982-1986	0.4	0	1.9	1.6	8.3	14.3	15.3	16	34.9	51.3	50.9	27.2	75	2.4	4
1987-1991	0.7	0	2.1	1.4	7.1	15.5	20.8	39.5	48.6	52.7	53	64.2	119	3.4	5.4
1992-1996	0	0.7	3	4.6	8.9	12.7	13.9	26.2	35.9	54.1	35.9	69.9	124	3.1	4.6
1998-2002	0	0.3	0.7	1.4	9.5	8	14.3	22.4	50.9	52	48.7	51.8	141	3.3	4.2
2003-2007	0.3	0.3	1.5	2.2	6.8	16.4	11.6	18.5	27.6	39.9	65.6	42.1	162	3.3	3.8
2008-2012	0.7	0.5	1.9	4.4	6.8	9.2	14.5	33.8	31	43.3	54.3	62.6	222	4.1	4.4
2012-2016	0.9	0.3	1.4	2.8	6.5	11	14.9	25.3	39.4	51.9	62.5	68.5	255	4.7	4.4
2013-2017	0.7	0.2	1.9	4.3	7	11	16.8	25.6	37.1	48	71.2	63.7	271	4.8	4.6

MUJERES

Periodo	30-34	35-39	40-44	45-49	50-54	55-59	60-64	65-69	70-74	75-79	80-84	85	n	TC	TEE
1962-1966	0.9	2.1	1.4	11.9	2	12.5	19.1	5.6	15.2	24.4	39.6	0	29	1.8	3.3
1967-1971	0.7	0.9	1.1	5.3	8.2	8.8	8.8	37.6	6.6	26.3	0	0	35	1.7	3.4
1972-1976	0.6	0.7	2.5	2.1	5.2	7.2	15.2	22.7	9	43.4	0	0	42	1.7	3.2
1977-1981	0	0	0.7	1.7	3.3	18	14.2	14	28.7	48.1	34.2	23.9	54	1.8	3.6
1982-1986	0	1.7	2.4	1.4	4.8	12.5	15.7	25.7	48.1	71.5	39.3	22.2	102	2.9	4.5
1987-1991	0.3	0.7	1.5	2.4	4.8	8.8	18.7	14.9	26.5	50.3	44.5	73.5	107	2.7	3.8
1992-1996	0.5	0	0.8	2.1	7.3	7.6	15.9	24.9	36.8	57.2	74.5	62.3	149	3.4	4.4
1998-2002	0.2	1.3	0.9	3.5	5.6	7.1	13.7	26.7	30.4	48.4	63.3	51.3	182	3.7	4
2003-2007	0.2	0.2	1.3	3.6	6.6	6.1	11.7	20.3	24.9	44.3	43.7	67.4	204	3.8	3.5
2008-2012	0.2	0.2	1.4	2	3.8	6.2	11.9	21.4	41.4	32.6	55.8	75.1	257	4.4	3.6
2012-2016	0.2	0	2.5	1.7	5.3	7.3	12.1	22.1	28.5	42.4	67.5	76.5	309	5.1	3.7
2013-2017	0.6	0.2	1.7	1.2	5	6.5	13.5	24	28.9	40.6	66.9	70.1	318	5.1	3.7





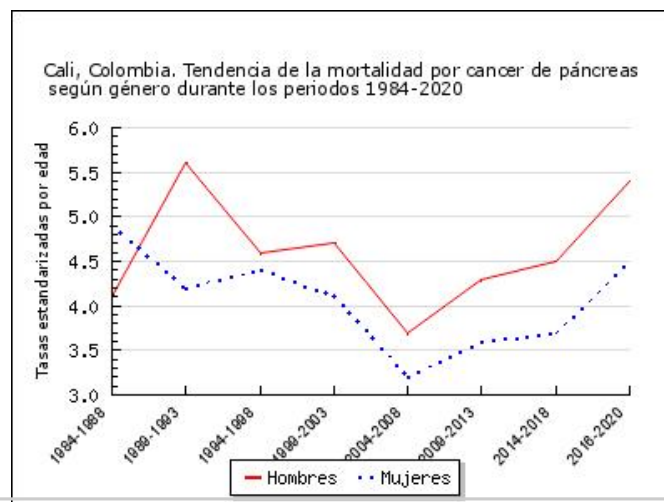
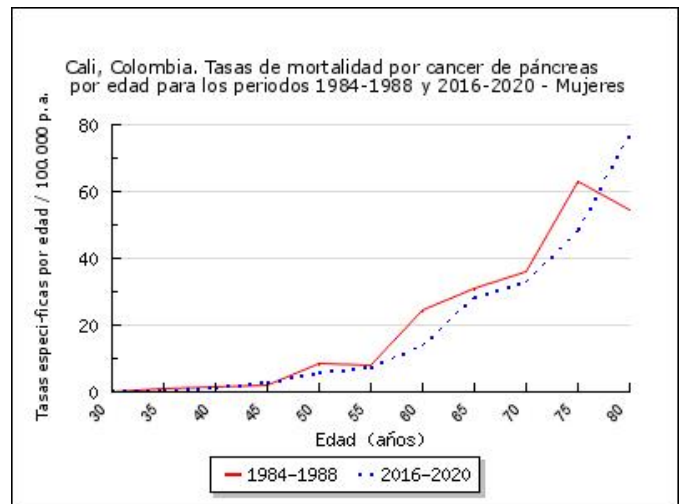
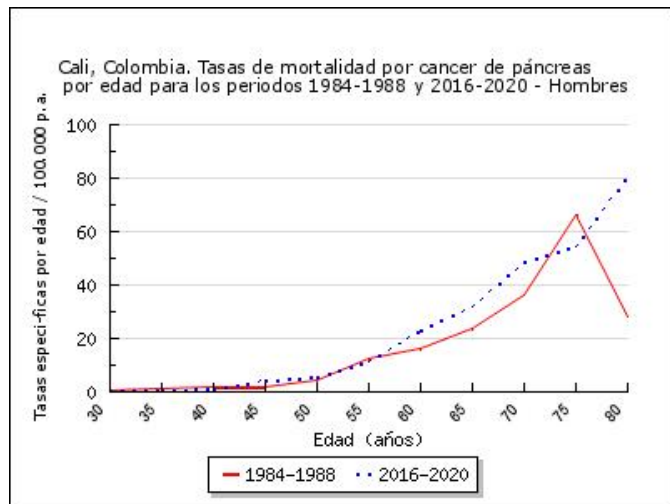
Cali, Colombia. Tasas de mortalidad por cáncer de páncreas específicas por edad, crudas y ajustadas por edad durante el periodo 1984-2020

HOMBRES

Periodo	30-34	35-39	40-44	45-49	50-54	55-59	60-64	65-69	70-74	75-79	80-84	85	n	TC	TEE
1984-1988	0.4	1	1.9	1.6	4.4	12.6	16	23.6	36	66.4	27.9	50.8	79	2.5	4.1
1989-1993	0.9	0	1	1.9	7.5	13.8	21.7	50.3	50.4	64.8	35.1	50	130	3.6	5.6
1994-1998	0	1	2.8	4.8	7	12.6	11.7	25.9	40.8	53.5	65	47.3	135	3.3	4.6
1999-2003	0.6	0.6	1.4	3.1	6.5	9.8	14	29.5	44.1	66.9	50.6	86.4	167	3.8	4.7
2004-2008	0	0.3	0.6	2.1	6.1	15	12.5	18	32.8	44.3	52.8	39.4	164	3.3	3.7
2009-2013	0.5	0.3	1.9	3.5	6.2	8.4	10.4	32.7	35.8	49.8	55.3	68.4	223	4.1	4.3
2014-2018	0.4	0	1.7	4	7.1	7	13.4	25.7	41.5	63.4	56.1	88.3	252	4.5	4.5
2016-2020	0.6	0.9	1.3	4.3	5.6	11.5	22.9	31.6	48.5	54.4	80.8	93.2	345	5.9	5.4

MUJERES

Periodo	30-34	35-39	40-44	45-49	50-54	55-59	60-64	65-69	70-74	75-79	80-84	85	n	TC	TEE
1984-1988	0	0.8	1.7	2.1	8.5	8	24.7	31.2	36	62.9	54.3	63.2	117	3.3	4.9
1989-1993	0.5	0.3	3.2	0.6	5.3	7.5	14.5	19.6	43.9	56.1	59.6	92.6	128	3.1	4.2
1994-1998	0.2	0	1.1	0.9	6.6	11.1	13.7	26.9	35.9	67.2	74.2	68.6	167	3.7	4.4
1999-2003	0	0.8	0.3	1.8	8.4	11.3	18.2	27.1	27.7	40.5	57.4	45	190	3.8	4.1
2004-2008	0	0.5	0.5	1.6	5.6	5.8	8.9	19	22.8	43.2	53.9	85.8	199	3.6	3.2
2009-2013	0	0.5	0.7	1.9	4.2	8	9.5	22.6	30.1	50.8	63.4	80.4	277	4.7	3.6
2014-2018	0.6	0.5	0.7	1.9	3.4	10.2	9.9	22.1	30	42.8	69.6	85.2	300	4.9	3.7
2016-2020	0.4	0.6	1.4	3.2	5.8	7.4	13.8	28.4	32.8	48.3	77.7	117.7	430	6.7	4.5



TC Tasas crudas; TEE Tasas estandarizadas por edad con la población mundial de referencia