

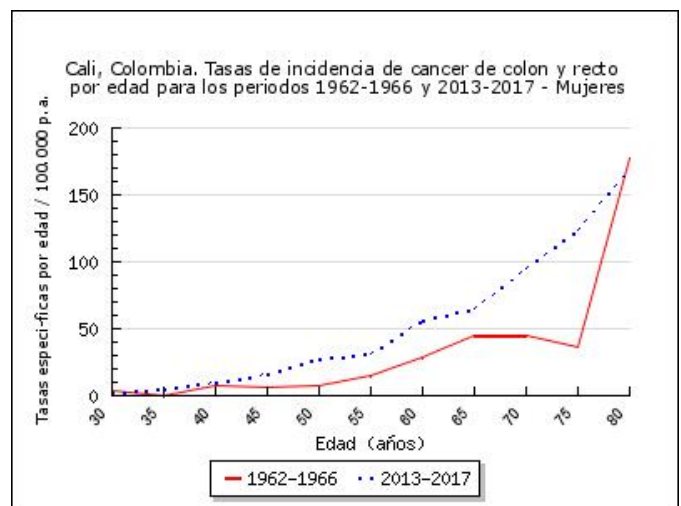
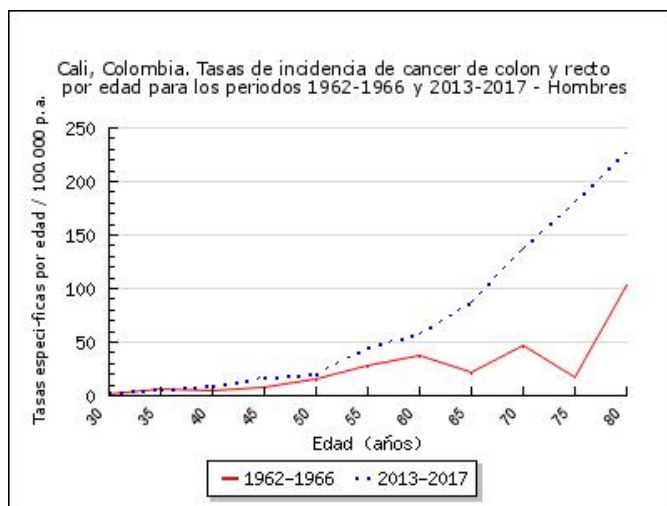
Cali, Colombia. Tasas de incidencia de cáncer de colon y recto específicas por edad, crudas y ajustadas por edad durante el periodo 1962-2017

## HOMBRES

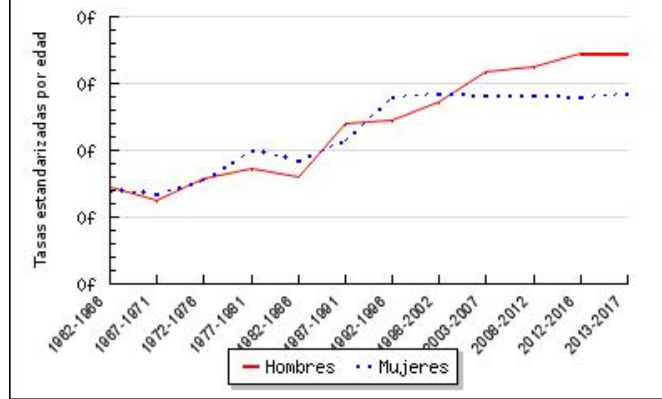
Periodo	30-34	35-39	40-44	45-49	50-54	55-59	60-64	65-69	70-74	75-79	80-84	85	n	TC	TEE
1962-1966	1	7	4.5	7.7	15.8	27.8	37.3	21.4	46.2	17.3	103.2	0	57	4	7.3
1967-1971	2.7	1	2.4	8.2	18.8	17.6	26.3	35.1	26.4	61.4	0	0	54	3	6.3
1972-1976	0.7	0.9	6.9	6.3	7.6	16.5	33.3	50.4	68	74.7	0	0	83	3.9	7.9
1977-1981	3	2.8	5.6	8.3	23.7	24.5	21	20.4	72.9	78	75.1	113.6	120	4.6	8.6
1982-1986	2.5	1	4.5	2.4	16.6	16.7	41.4	31.9	69.7	66.8	81.4	54.4	152	4.9	8
1987-1991	1.7	6.3	4.1	8.9	14.2	26.8	52.6	71.9	69.1	113.6	106.1	139.1	276	7.8	12
1992-1996	1.1	3.7	9	11	18.4	24.6	41.8	56.8	97	138.6	155.5	166	341	8.7	12.2
1998-2002	4.1	4.1	6.4	13.3	16.7	24.7	49.1	85.9	82.1	125.2	186.1	168.4	472	10.9	13.6
2003-2007	4.6	5.1	8.9	10.1	26.3	38	53.9	83.9	132.7	165	169.3	215.3	678	13.9	15.9
2008-2012	4.1	6.1	8.1	17.6	24.1	43.7	58.7	95.7	119.7	157.1	171	164.4	832	15.5	16.2
2012-2016	3.9	5.1	8.6	16	21.5	43.6	59.6	83	144.3	207.5	202.5	238.1	993	18.2	17.2
2013-2017	3.3	6.9	9.9	17.4	20.7	45.7	57.4	87.7	137.6	182	228.3	230.1	1025	18.1	17.3

## MUJERES

Periodo	30-34	35-39	40-44	45-49	50-54	55-59	60-64	65-69	70-74	75-79	80-84	85	n	TC	TEE
1962-1966	3.5	0	7.1	6.8	8.1	15.6	28.6	45.2	45.6	36.6	178	20	61	3.7	7
1967-1971	0.7	3.6	5.7	11.9	9.9	13.2	32.1	7.6	65.8	63.1	0	0	72	3.5	6.7
1972-1976	2.5	2.8	2.5	3.2	11.8	19.7	30.5	35.7	62.6	90.7	0	0	102	4.2	7.7
1977-1981	1	4	7.7	10.5	12	27	35.5	50.5	50.2	68.7	182.4	143.1	167	5.6	10
1982-1986	1.1	3.9	4.8	7.1	14.4	25.1	32.7	47.8	63.3	79.4	91.6	103.8	217	6.2	9.2
1987-1991	4.6	1.8	3	9.2	18.7	24.7	44.6	52.2	79.5	113.2	84	116.3	313	8	10.8
1992-1996	3.1	2.1	11.4	12.5	18.8	34.9	54.5	66	98.7	127.4	125.6	202.4	484	11	14
1998-2002	3.6	7	7.2	13.9	18.1	42.4	50.4	67.1	105.7	126.1	129.4	161.1	648	13.3	14.3
2003-2007	3.2	5.4	9.8	11.9	23.4	33.2	52.3	75.3	97.9	125.2	122.3	241.6	807	15	14.1
2008-2012	3.1	9.2	11.8	18.7	20.5	35.5	38	76.3	95.9	146.4	178.2	139.4	996	17	14.1
2012-2016	2.8	6.8	7.8	14.9	24.8	31.8	52.5	67.7	96.8	130.8	180.5	207.1	1132	18.5	14
2013-2017	3	5.6	9.8	16.2	27.4	31.4	56.5	65.4	95.6	124.3	170.2	190.5	1168	18.8	14.3



Cali, Colombia. Tendencia de la incidencia de cancer de colon y recto según género durante los periodos 1962-2017



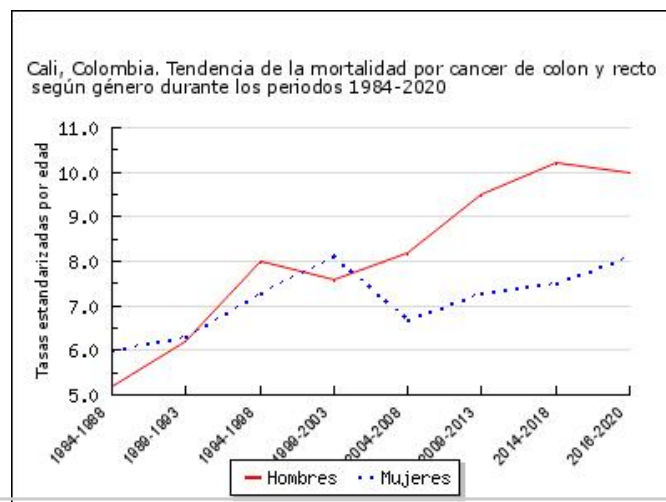
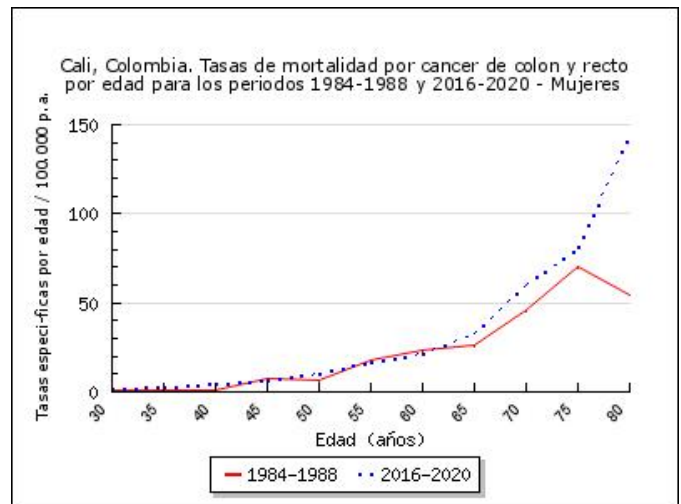
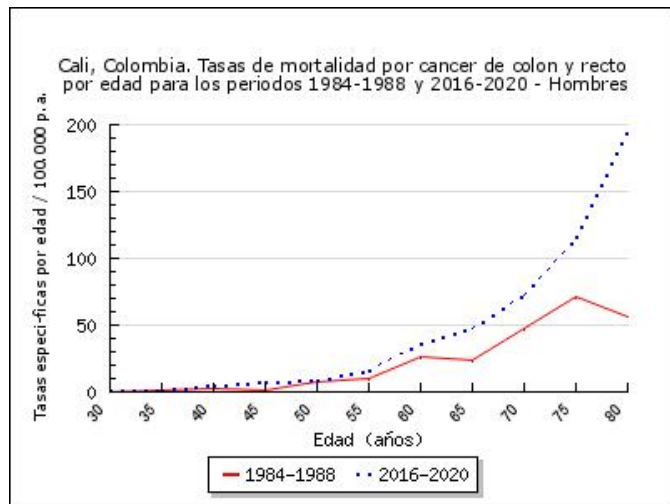
Cali, Colombia. Tasas de mortalidad por cáncer de colon y recto específicas por edad, crudas y ajustadas por edad durante el periodo 1984-2020

**HOMBRES**

Periodo	30-34	35-39	40-44	45-49	50-54	55-59	60-64	65-69	70-74	75-79	80-84	85	n	TC	TEE
1984-1988	0	1	2.5	1.6	7.1	10.3	26.1	23.6	48	71.2	55.9	63.5	100	3.1	5.2
1989-1993	0.9	2	2	1.9	5.3	12.8	18.3	40.2	40.8	68.7	119.3	160	150	4.1	6.2
1994-1998	2.2	2	3.6	4.8	9.6	16	22.3	55.9	52.4	98	129.9	149.9	241	5.9	8
1999-2003	0.3	2.5	1.7	5.3	11.3	11.9	28	45.4	69.3	64.7	105.3	141.9	267	6.1	7.6
2004-2008	1.6	2.3	4.2	3.3	9.5	17.2	26.6	42.6	73.1	93.9	132.1	144.4	367	7.4	8.2
2009-2013	1.2	1.1	3.3	10.1	11.8	22.1	28.4	54.2	70.5	119.9	132.8	165.6	506	9.3	9.5
2014-2018	1.1	1.8	3.3	9.7	11.6	18.8	26.2	60.9	84.1	138.6	142.7	217	570	10.2	10.2
2016-2020	1.2	1.8	5	6.9	8.3	16.5	35.7	47.1	72.8	115.3	196.2	266.3	644	11	10

**MUJERES**

Periodo	30-34	35-39	40-44	45-49	50-54	55-59	60-64	65-69	70-74	75-79	80-84	85	n	TC	TEE
1984-1988	0.7	1.2	0.6	7.6	6.9	18	23.5	26	45.6	70.3	54.3	98.3	148	4.1	6
1989-1993	1.6	0.7	2.3	4	8.6	13.4	21.3	39.3	49.6	91.5	82.5	69.4	191	4.7	6.3
1994-1998	1.5	1.4	5.1	3.3	9.4	15.3	23.3	31.3	56.9	94.1	127.3	150.9	286	6.3	7.3
1999-2003	1.5	3.2	3	7.3	8	20.4	33.6	37.6	57.6	89	120.2	152.4	391	7.9	8.1
2004-2008	1.4	2.2	2.8	4	9.7	11.6	21.2	35.9	50.9	78.7	91.2	139.4	412	7.5	6.7
2009-2013	1.3	3.1	4.8	7	8.9	13.2	21.2	32.3	55.8	90.6	121.9	160.8	557	9.4	7.3
2014-2018	1.2	3	4.6	6.2	11.7	15	19.7	33.7	64.4	86.6	126.3	153	606	10	7.5
2016-2020	1.6	2.9	4.5	6.9	10.4	16.7	21.3	32.7	59.6	80.2	144.6	214.5	770	12.1	8.1



TC Tasas crudas; TEE Tasas estandarizadas por edad con la población mundial de referencia