

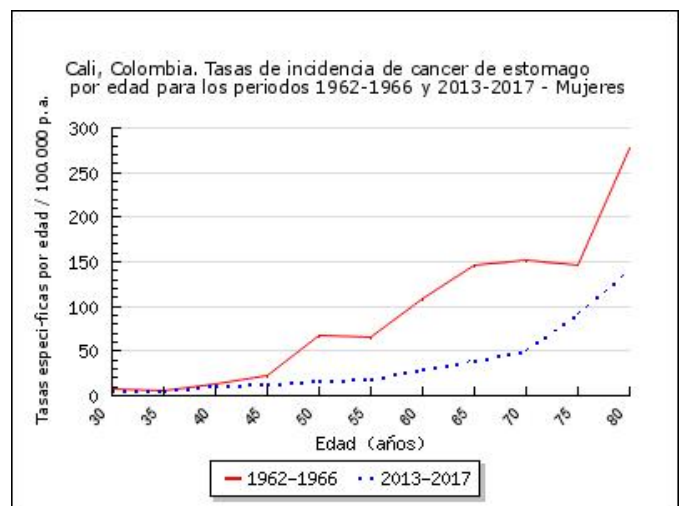
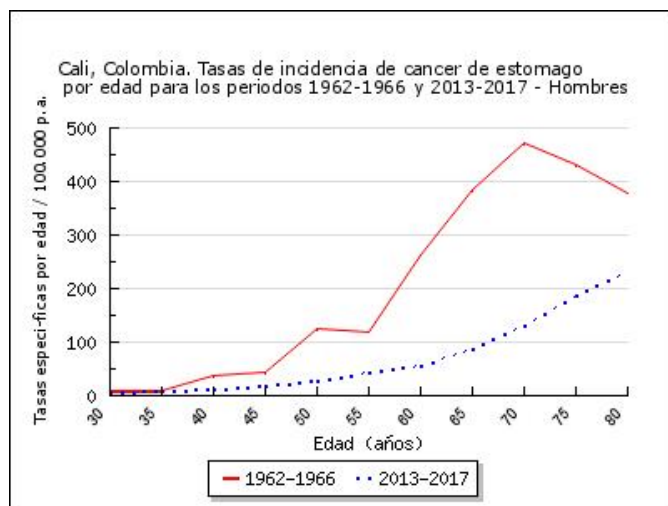
Cali, Colombia. Tasas de incidencia de cáncer de estomago específicas por edad, crudas y ajustadas por edad durante el periodo 1962-2017

## HOMBRES

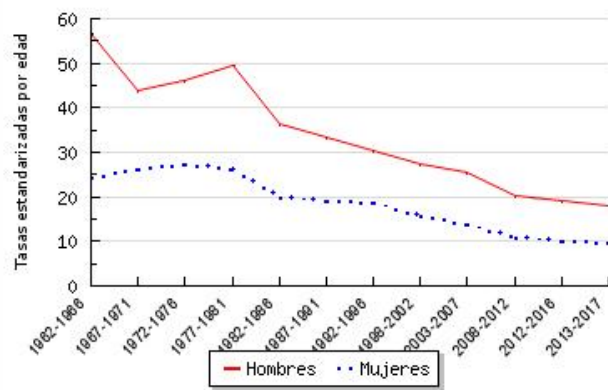
Periodo	30-34	35-39	40-44	45-49	50-54	55-59	60-64	65-69	70-74	75-79	80-84	85	n	TC	TEE
1962-1966	8.6	9.3	38.5	42.8	124.5	117.7	261.1	385.9	473.4	431.4	378.7	326.3	367	25.2	56.7
1967-1971	4.5	7.8	14.3	47.7	78.9	131.5	207.2	223.6	249.9	491	0	0	360	20.3	43.7
1972-1976	5	7.7	25.5	41.6	77.4	99.3	204.8	290.6	305.9	448	0	0	472	22.1	46.3
1977-1981	4.8	7.8	23	29.2	72.2	139.9	197.1	291.7	277.9	595.1	750.5	613.6	605	23.2	49.6
1982-1986	3.8	5.1	11.6	36.4	54.3	86.9	136.5	228.3	279.1	338.7	437.7	244.9	655	21	36.3
1987-1991	5.9	6.7	13.6	22.5	46.6	79.4	129.7	194.1	230.3	328.7	393.9	535	747	21.4	33.3
1992-1996	5.3	8.7	13.7	26.1	44.4	78.2	117.4	142.7	242.6	351.4	358.7	401.7	842	21.3	30.5
1998-2002	4.2	9.8	13.9	24.6	45.6	56	95.5	148.3	248	219.6	288	349.9	935	21.6	27.4
2003-2007	4.9	7.4	13.3	23.9	35	53.8	99.4	143.4	220.6	212.2	345.4	346.4	1077	22.1	25.5
2008-2012	3.8	7.5	13	21.7	28.4	49.2	65.4	109.7	167.4	195.6	233.3	309.2	1041	19.4	20.3
2012-2016	5.3	9	11.4	22.5	26.2	44.8	63.8	92.9	138.2	197.4	237.6	328.3	1105	19.7	19.1
2013-2017	4.8	8.1	11	19.4	29.2	42.7	56.9	87.7	132.7	189	230.7	276	1074	19	18

## MUJERES

Periodo	30-34	35-39	40-44	45-49	50-54	55-59	60-64	65-69	70-74	75-79	80-84	85	n	TC	TEE
1962-1966	6.8	6.2	12.8	22	67.5	65.5	108.3	146.8	152.1	146.3	277	160.2	210	12.8	24.5
1967-1971	7.3	9.6	17.2	21	32.9	52.6	108.1	124	236.8	299.9	0	0	267	13.2	26.1
1972-1976	1.3	10.6	21.2	12.7	51.1	68.1	80.5	158.7	188	331.2	0	0	362	14.8	27.3
1977-1981	4.2	5.7	11.9	27.1	32.8	52.6	97.8	160	154.3	274.7	398.9	381.6	415	13.9	26.3
1982-1986	2.2	3.5	10.3	9.9	35.8	44.9	56.2	114	174.8	182.6	301.1	259.5	460	13.1	19.9
1987-1991	1.5	6.7	6.8	15.2	22.1	54.8	64.3	125.3	136.6	188.8	247.2	251	547	14	19.3
1992-1996	4	6.1	10.3	12	22.5	35.7	54.5	131.8	138.9	166.4	227.5	321.7	650	14.7	18.8
1998-2002	4.9	5.1	11.2	11.2	19	27.7	51.9	79.1	130	153.8	181.2	274.6	736	15.1	15.9
2003-2007	5.6	6.2	8.4	12.7	21.2	32.8	45.6	71.7	100.7	139.5	163.9	213.5	808	15	13.9
2008-2012	4.6	7.3	9.3	14.3	12.7	17.8	30.4	52.3	79	105.3	151.2	160.9	769	13.1	10.8
2012-2016	3.7	5.9	9.8	12	18.5	18	28.6	44.6	59.8	94.5	169.5	173.5	825	13.6	10
2013-2017	5.1	5.6	10.5	13.3	17.4	18.5	30.3	39.9	50.9	92.3	141.3	161.7	823	13.3	9.8



Cali, Colombia. Tendencia de la incidencia de cancer de estomago según género durante los periodos 1962-2017



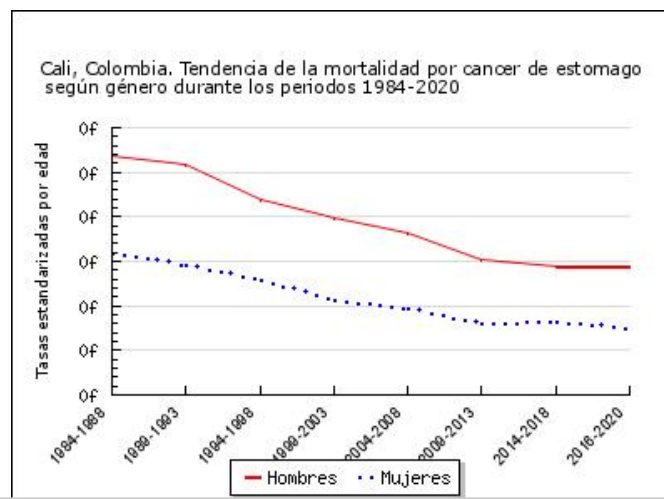
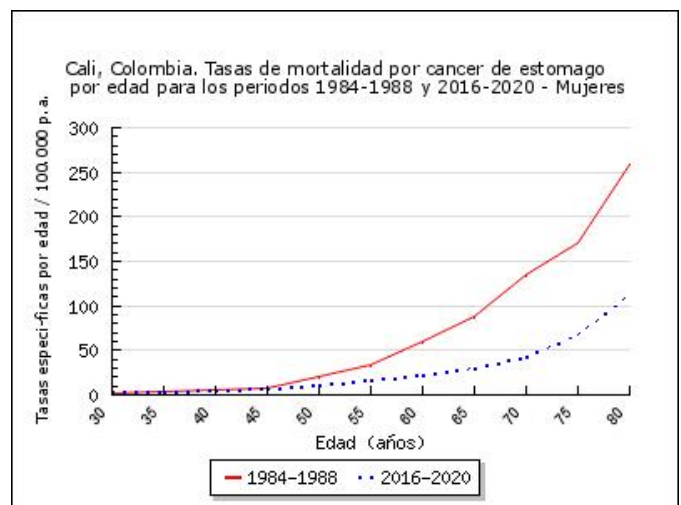
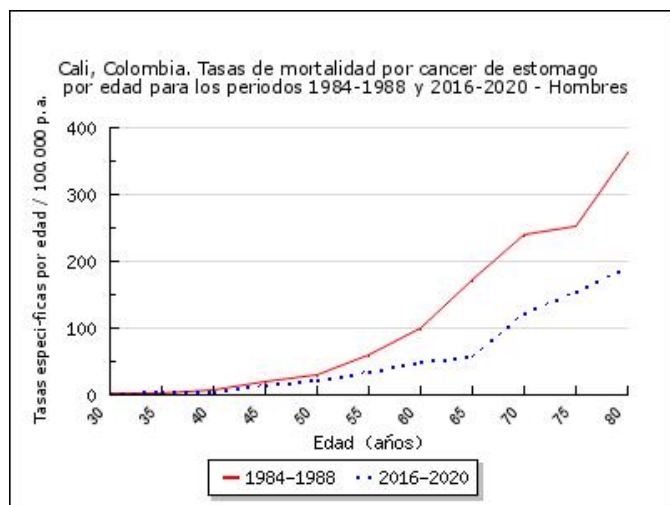
Cali, Colombia. Tasas de mortalidad por cáncer de estomago especificas por edad, crudas y ajustadas por edad durante el periodo 1984-2020

**HOMBRES**

Periodo	30-34	35-39	40-44	45-49	50-54	55-59	60-64	65-69	70-74	75-79	80-84	85	n	TC	TEE
1984-1988	2.8	2.4	8	21	30.2	59.5	100.2	171.5	240.2	251.5	363	495.3	500	15.7	26.8
1989-1993	3.4	6.3	7.8	14.2	33	62.2	99.4	127.4	218.3	381.4	287.7	480.1	618	17	25.9
1994-1998	2.8	6.4	6.5	18.2	22.3	53.8	82.5	129.4	176.6	264.4	265.3	378.6	643	15.9	22
1999-2003	3.6	6.5	8.6	18	25.8	39.3	62.1	104.4	204.8	191.8	261.2	357.8	709	16.1	19.9
2004-2008	2.4	4.5	9	13	26.5	38.4	67.9	89.9	174	187.9	254.3	266.8	808	16.2	18.2
2009-2013	1.9	4.8	6.4	13.3	20.1	35.8	48.2	74.1	133.4	141.6	232.3	327.6	805	14.8	15.2
2014-2018	2.2	5.1	7.8	14.2	16.7	33.6	49.7	71.9	114.2	128.3	214	319.9	807	14.5	14.4
2016-2020	2.9	5.5	4.5	14.1	23.1	34.1	50.3	56.6	122.2	153.8	191.6	302.9	928	15.9	14.4

**MUJERES**

Periodo	30-34	35-39	40-44	45-49	50-54	55-59	60-64	65-69	70-74	75-79	80-84	85	n	TC	TEE
1984-1988	2.1	4.6	4.7	8.2	20	33	60.6	88.5	134.4	170.1	259.4	266.8	392	11	15.9
1989-1993	1.1	3.3	6.8	11	13.9	27.7	51.2	96.8	120.2	147.6	224.7	277.7	438	10.7	14.6
1994-1998	2.9	4.6	7.3	9.8	20.9	26.4	33.8	64.9	98.8	156.8	180.3	274.4	502	11.1	12.9
1999-2003	3.2	4.5	4.2	6.6	9.3	18.1	30.8	65.7	93.4	129.5	139.3	225.2	522	10.5	10.7
2004-2008	2.9	3.7	5.6	8.7	12.5	22.7	26.6	53.4	70.2	106.6	151.3	198.4	611	11.2	9.8
2009-2013	3.2	4.6	7	8.7	11.7	12.2	22.6	35.4	57.3	87.6	115.2	186.9	610	10.2	8.1
2014-2018	3.1	4.2	8.1	8.6	13.5	13	24.2	35.4	54.8	81.1	119.8	191.7	659	10.9	8.2
2016-2020	3.2	4	6.3	6.9	11.4	16.7	23	29.2	42.9	67.9	111.8	188.7	703	11	7.5



TC Tasas crudas; TEE Tasas estandarizadas por edad con la población mundial de referencia