

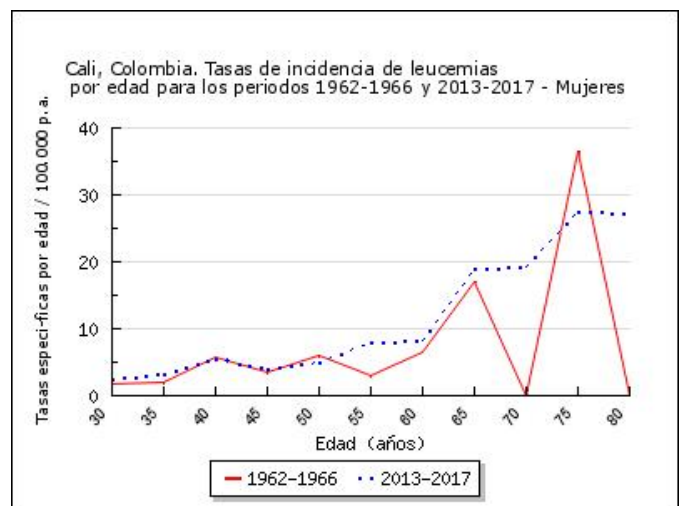
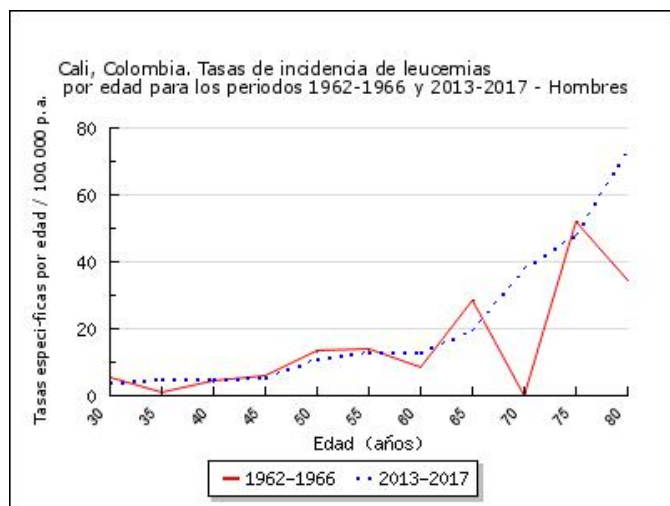
Cali, Colombia. Tasas de incidencia de leucemias específicas por edad, crudas y ajustadas por edad durante el periodo 1962-2017

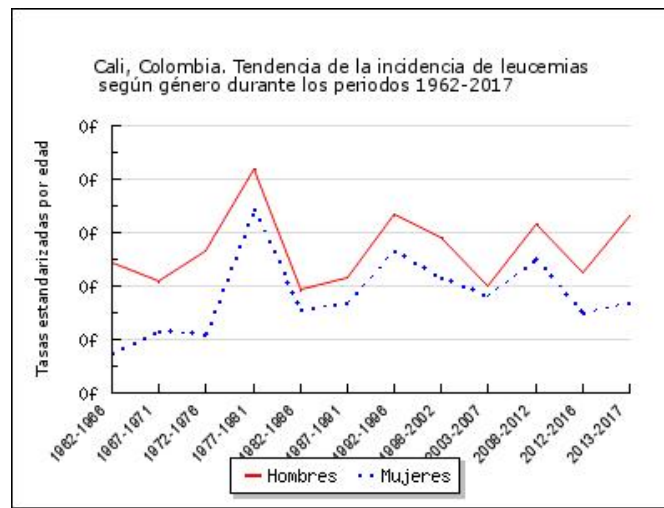
HOMBRES

Periodo	30-34	35-39	40-44	45-49	50-54	55-59	60-64	65-69	70-74	75-79	80-84	85	n	TC	TEE
1962-1966	5.7	1.2	4.4	5.8	13.6	13.8	8.3	28.6	0	51.8	34.4	0	76	5.3	6.9
1967-1971	7.2	5.8	7.2	6.5	11.4	20.3	9.9	17.6	19.8	8.8	0	0	86	4.8	6.2
1972-1976	2.8	3.5	2.9	11.4	7.6	12.4	10.3	19.5	28.3	49.7	0	0	119	5.5	7.3
1977-1981	4.8	7.9	6.4	8.4	9.9	17.4	31.5	37.3	36.4	48.8	18.8	22.7	208	8	10.4
1982-1986	4.1	2	1.9	2.4	5.5	9.6	15.3	6.9	34.9	35.9	51	0	154	5.1	5.9
1987-1991	2.3	2	2	10.2	3.2	10.3	15.9	19.8	15.4	36.5	53.1	64.2	176	5.1	6.3
1992-1996	4.7	4.4	3.9	1.8	9.6	17.2	16	32.1	42.2	47.2	71.7	43.6	286	7.3	8.7
1998-2002	5	5	4.3	6	5.6	8.8	9.9	28.2	26.3	33.1	53.2	71.3	305	7	7.8
2003-2007	2.7	2.6	6	2.9	6.8	8.8	11.5	16.7	23.6	38.1	51.8	46.9	279	5.7	6
2008-2012	4.3	4.8	3.4	9.4	7.5	9.3	12.6	27.3	35.4	59.3	70.5	82.2	430	8	8.3
2012-2016	2.2	3.1	2.8	4.3	5.9	8.3	7.7	14	26.2	36	55	50.5	350	6.3	6.5
2013-2017	4.2	4.9	5	5.5	11	12.8	12.8	19.5	38.1	48	73.7	46.1	484	8.6	8.6

MUJERES

Periodo	30-34	35-39	40-44	45-49	50-54	55-59	60-64	65-69	70-74	75-79	80-84	85	n	TC	TEE
1962-1966	1.7	2	5.7	3.4	6.1	3.1	6.4	16.9	0	36.6	0	0	43	2.6	3.5
1967-1971	1.5	3.6	4.5	2.6	4.9	13.2	8.7	11.3	19.7	10.5	0	0	73	3.5	4.3
1972-1976	1.9	0.7	2.5	1.1	5.2	7.2	8.8	9.7	9	23.6	0	0	83	3.4	4.2
1977-1981	3	3.5	5.6	7.9	11	9	26.7	53.3	25.2	27.5	34.2	47.7	196	6.5	8.9
1982-1986	3	3.1	3	2.1	5.6	6.3	9.1	12.9	17.8	15.8	13	44.4	150	4.4	5.1
1987-1991	2.7	3.2	3	3.6	6.3	12.4	11.4	12	18.4	37.7	24.7	30.5	179	4.6	5.4
1992-1996	3	2.4	4.8	5.7	3.6	13.7	10.1	24.9	31.8	41.6	58.8	51.9	275	6.3	7.3
1998-2002	3	5	5.3	3.8	6.9	6.5	12.2	13.8	20.7	31.1	57.5	29.3	291	6	6.3
2003-2007	2.2	2.9	1.4	5.1	6.2	6.1	10.4	12.3	24	26	43.7	33.7	297	5.5	5.6
2008-2012	2.8	3.4	5.5	6.4	4.9	9.1	14.6	19.5	36.8	34.8	54	53.6	436	7.5	7
2012-2016	2	2.6	4.1	3.3	4.5	6.3	9.1	16.4	18.5	21.1	23.5	37.4	328	5.3	5
2013-2017	2.4	3.3	5.6	4.1	5	7.9	8.2	19	19.3	27.5	27.3	37.8	375	6.1	5.4





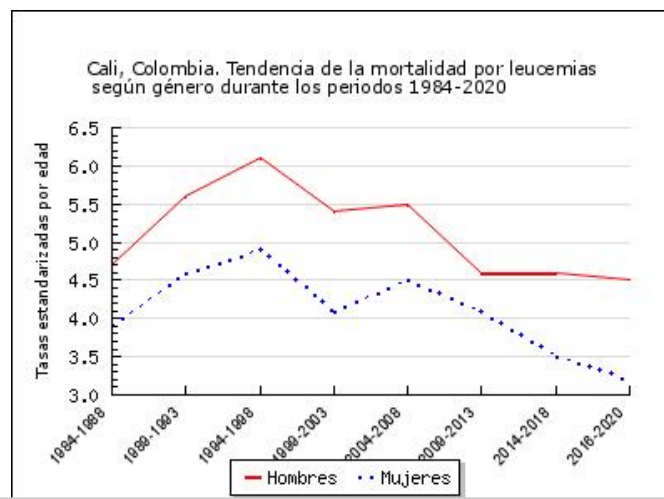
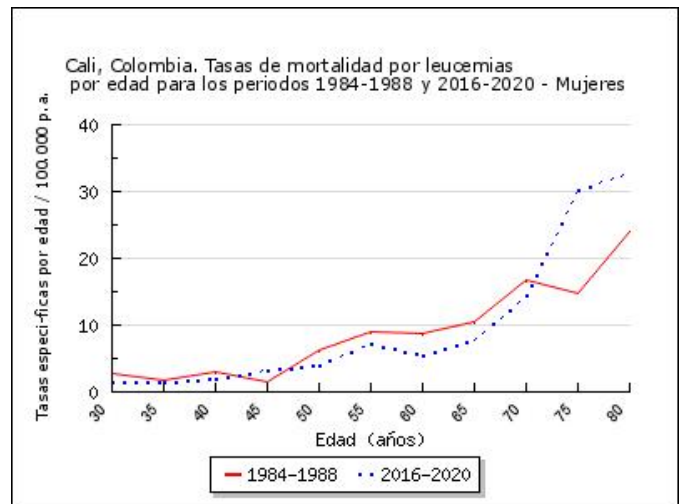
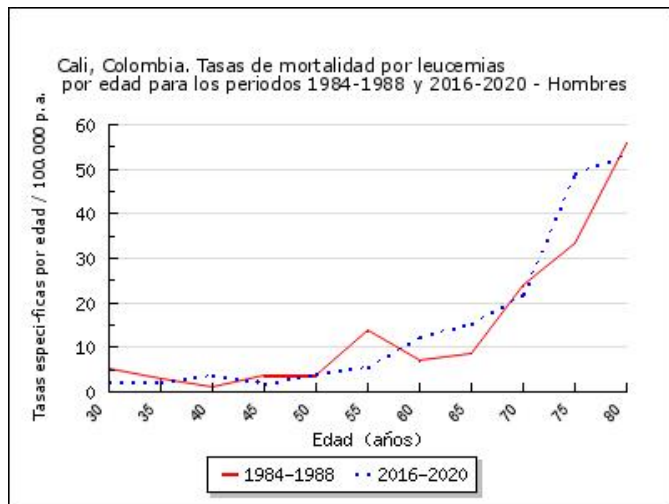
Cali, Colombia. Tasas de mortalidad por leucemias específicas por edad, crudas y ajustadas por edad durante el periodo 1984-2020

HOMBRES

Periodo	30-34	35-39	40-44	45-49	50-54	55-59	60-64	65-69	70-74	75-79	80-84	85	n	TC	TEE
1984-1988	5.1	2.9	1.2	3.9	3.6	13.7	7.3	8.6	24	33.2	55.9	12.7	128	4	4.7
1989-1993	3.7	1.2	2.9	5.2	1.5	6.9	12.6	25.1	26.4	45.8	56.1	50	167	4.6	5.6
1994-1998	4.4	2	4.1	3.2	5.1	10.9	11.7	17.7	33	47.5	54.1	39.4	212	5.2	6.1
1999-2003	1.7	3.7	5.2	4.8	3.8	6.3	7.9	15.9	25.2	29	50.6	49.3	219	5	5.4
2004-2008	3.2	3.1	3.6	3.6	3.9	8.3	11.8	26.5	26.5	40.8	36.3	56.9	259	5.2	5.5
2009-2013	2.8	2.9	1.4	5.5	3.1	4.4	8.7	11.2	18.4	49.8	74.7	50.4	259	4.8	4.6
2014-2018	2.9	3.1	1.4	4	5.1	7.4	5.9	7.3	18.7	48.7	61.1	88.3	270	4.9	4.6
2016-2020	2.3	2.1	3.7	2	4.1	5.7	12.4	15.5	21.7	49	53.1	76.6	285	4.9	4.5

MUJERES

Periodo	30-34	35-39	40-44	45-49	50-54	55-59	60-64	65-69	70-74	75-79	80-84	85	n	TC	TEE
1984-1988	2.8	1.7	2.9	1.4	6.2	9	8.7	10.4	16.8	14.8	24.1	35.1	117	3.3	3.9
1989-1993	2.7	3.3	1.4	4.6	7.9	7.5	7.7	16.8	15.3	29.5	9.2	34.7	159	3.9	4.6
1994-1998	1.7	2.6	4.4	3.7	5	7	8	12.3	23.9	33.6	24.7	54.9	203	4.5	4.9
1999-2003	2.9	3.4	3.9	1.8	3.6	5.7	7	9.6	13.8	27.5	57.4	20.8	206	4.2	4.1
2004-2008	1.9	3	2	3.2	6.6	6.2	8.9	13.4	25.4	17.8	47.7	42.9	257	4.7	4.5
2009-2013	1.5	2.9	2.9	3.4	3.9	6.2	8.6	12.8	22.6	26.9	25	50	273	4.6	4.1
2014-2018	1.2	1.9	2.9	2.6	3.9	2.5	8.6	13.8	17.6	24.6	16.2	58.1	246	4.1	3.5
2016-2020	1.6	1.5	2.1	3.2	3.9	7.2	5.6	7.7	14.3	30.3	32.7	54.8	271	4.2	3.2



TC Tasas crudas; TEE Tasas estandarizadas por edad con la población mundial de referencia